



CERTIFICATE



Management system as per ISO 19600:2014

In accordance with TÜV AUSTRIA CERT procedures, it is hereby certified that



Rhomberg Sersa Rail Group
Mariahilfstraße 29
6900 Bregenz
ÖSTERREICH
Central

applies a management system in line with the above standard for the following scope

industrial & mechanised construction
project business
international acquisition & consulting
electrical installation
track welding work
overhead contact lines

Certificate Registration No. TA197173001943 / BT00

Valid until 2024-10-12

Initial certification: 2017-02-01

Certification Body
at TÜV AUSTRIA CERT GMBH

Vienna, 2021-09-28

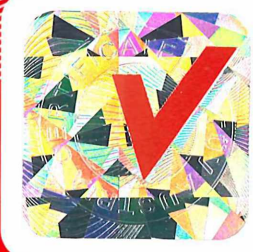
This certification was conducted in accordance with TÜV AUSTRIA CERT auditing and certification procedures and is subject to regular surveillance audits.

TÜV AUSTRIA CERT GMBH Deutschstraße 10 A-1230 Wien www.tuv.at

Online Verification



www.tuv.at/certcheck



Attachment to the Certificate No. TA197173001943 / BT00

The certificate is valid for the following subsidiaries

sub certificate BT01

Rhomberg Bahntechnik GmbH
A-6900 Bregenz, Mariahilfstraße 29

total/general contractor, fixed tracks, track system technology, project management, installations, tunnel reconstruction & safety

sub certificate BT02

Rhomberg Bahntechnik GmbH
D-45326 Essen, Krablerstraße 165

railway technology, electrical installation, project management

sub certificate BT03

RK safetec GmbH
A-6900 Bregenz, Mariahilfstraße 29

planning, delivery, installation, maintenance of side electrical installation, construction lights and safety equipments

sub certificate BT04

Bahnbau Wels GmbH
A-4600 Wels, Haidestraße 53

railway construction and mechanized track maintenance, operation, maintenance and repair of track construction machines, projects trade and logistics

sub certificate BT05

Bittner Bahn- und Gleisbau GmbH
A-4600 Wels, Haidestraße 53

commercial line construction

sub certificate BT06

Rhomberg Gleisbau GmbH
A-6900 Bregenz, Mariahilfstraße 29

commercial line construction

sub certificate BT07

Universale Bau GmbH
A-5621 St. Veit/Pg. – Salzburg, Gewerbestraße 10a

commercial line construction, cable construction, rail civil engineering

sub certificate BT08

Rhomberg Fahrleitungsbau GmbH
A-2351 Wiener Neudorf, IZ-NÖ Süd, Straße 3, Objekt M1/II

marketing and sales, system design and engineering, project planning and execution of catenary, power supply / electrification systems / 50-Hz-installation and network control including maintenance and after sales service and multidisciplinary projects

sub certificate BT09

Sersa Group AG (Schweiz)
CH-8048 Zürich, Würzgrabenstraße 5

construction and maintenance of railway tracks, SLS Sersa Second Life System®, lease of machinery and equipment, personnel lease, project management of railway technology projects, evaluation and introduction of new procedures, dispatcher training, training for security-relevant jobs in the field of railway, maintenance of track-bound vehicles rail transport services (RU)



sub certificate BT10

Sersa Technik AG
CH-5612 Villmergen, Nordstraße 1

track construction and track welding, maintenance management, track grinding, installation of overhead wire and cable systems, evaluation and introduction of new procedures

sub certificate BT11

Sersa Maschineller Gleisbau AG
CH-8307 Effretikon, Vogelsangstraße 6

mechanised track construction and truck maintenance, measuring systems for track construction machines, maintenance of track-bound vehicles, evaluation and introduction of new procedures

sub certificate BT14

SIT Schienenschweiss- & Isoliertechnik Rostock GmbH
D-18055 Rostock, Kassebohrer Weg 11-12

execution of permanent way welding, insulated joints, rail grinding and rail destressing operations

sub certificate BT16

Rhomberg Sersa Deutschland GmbH
D-12487 Berlin, Groß-Berliner Damm 86-88

planning, preparation and implementation of track construction services (ballast track and slab track), cable foundation and track civil engineering, level crossing and platform construction work of all kinds, installation and removal of twin-beam temporary bridges, renovation of tracks and switches with the SERSA SCREW HOLE RENOVATION SYSTEM SLS®, renovation of concrete sleepers with the SERSA SLEEPER CRACK GROUTING®, maintenance and management of track systems, ceiling closure by means of paving, slabs or asphalt, equipment of roads and railways

sub certificate BT17

Jumbo Tec GmbH
D-03139 Spremberg, Schwarze Pumpe, An der Heide, Postfach 10 01 03

preparation and implementation of track construction projects and provision of all kinds of track building machines and other technical and human resources, preparation and implementation of all business connected to this purpose
revision and maintenance of railway and road-rail vehicles and trading with these machines and spare and wear parts

sub certificate BT19

Rhomberg Rail Consult GmbH
A-6900 Bregenz, Mariahilfstraße 29

railway technology consulting, surveying services railway technology, provision of systems for track survey and alignment technology, sales system railway technology

sub certificate BT20

Rhomberg Sersa UK Limited
UNITED KINGDOM- Doncaster, Unit 2 Sarah Court Yorkshire Way DN3 3FD

railway engineering and service provider specialising in design and construction of slab track solutions, track renewal and maintenance, tunnels, stations, consultancy, planning, and design



sub certificate BT22

Rhomberg Rail Australia Pty Ltd
AUSTRALIA, NSW 2164, Wetherill Park, 9 McIlwraith St

design, construction and maintenance of railway infrastructure including procurement of materials, track and structures components rail services and project management of rail systems projects

sub certificate BT24

Rhomberg Sersa North America
Ontario, Canada K0E 1R0, Mallorytown KOE 1R0, 70 County Road # 5

all track activities involved in constructing new track, from final earthworks, laying ties and rail, ballasting and surfacing, welding, CWR installation, track inspection and commissioning. Core competencies in all conventional ballasted track, slab track, turnouts and crossovers as well as advisory and project delivery of rail systems, track construction and maintenance activities

sub certificate BT25

Rhomberg Sersa Vossloh GmbH
D-54343 Föhren, Industriepark Region Trier, Jean-Monnet-Straße 14

inspection, analysis and management of railway infrastructure; professional training and further qualification (BahnWege-Seminare); symposia; network digitization, construction and maintenance of railways and points; Wheel/Rail System-Service

sub certificate BT026

Rhomberg Bahntechnik AG
CH-8048 Zürich, Würzgrabenstraße 5

total/general contractor, fixed tracks, track system technology, project management, installations, tunnel reconstruction & safety

sub certificate BT027

Rhomberg Sersa Ireland Ltd
IRL-A027 Kildare, Unit 12 Kildare Town Centre, Claregate Street R51

railway construction and mechanised track maintenance operation, maintenance and repair of track construction machines, ancillary projects and logistics

Certification Body
at TÜV AUSTRIA CERT GMBH

Vienna, 2021-09-28

Online Verification



www.tuv.at/certcheck

page 3/3