



Contact us today  
for an appointment.  
Details on page 3.

# Track Display

## Showing rail competence

// Track Expo Dornbirn (A)

For the installation of different slab track systems, Rhomberg Sersa has developed innovative systems. Not least due to that, Rhomberg Sersa Rail Group is considered as innovation and market leader in ballastless track technology. In addition to providing high quality construction, our outstanding services furthermore include organisational, economic and technical consulting.

Rhomberg Sersa Rail Group customers benefit from more than 25 years of know-how in the evaluation, technology selection and planning of new construction and refurbishment projects.

**In Dornbirn (Austria) we showcase a variety of different slab track systems, alignment and track support solutions, as well as our certified Handrail.**

- IVES
- Getrac A3
- RHEDA 2000
- LVT & LVT-HA
- ÖBB-Porr (Slab Track Austria)
- Single support points in pre-cast concrete slab (IVES modification)
- Direct fixation
- RhoTAS – Track Alignment System
- RhoPPS – Pre-Positioning System
- RhoFAS – Fine Adjustment System
- LED-Handrail/ handraiLIT and Tunnel lighting solutions

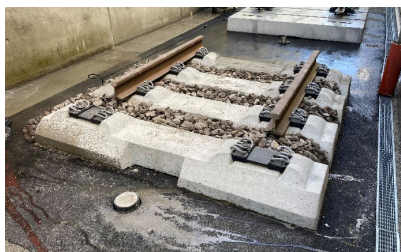
# Track Display

// Showing track competence – Product Overview



**IVES**  
Slab Track

Intelligent, Versatile, Efficient, Solid.



**Getrac A3**  
Slab Track

Prestressed wide sleepers on asphalt support layer.



**RHEDA 2000**  
Slab Track

Reinforced bi-block sleepers in in-situ cast track concrete layer.



**LVT & LVT-HA**  
Slab Track

Low Vibration Track (High Attenuation).



**ÖBB-Porr**  
(Slab Track Austria)  
Slab Track

Elastically supported precast slabs.



**Single support points in precast concrete slab (IVES modification)**  
Bergünertunnel

Rail fastenings: Vossloh DFF 304 RS.



**Direct fixation**  
(Single support points)

The optimal single support point for slab track.



**RhoPPS**  
Pre-Positioning System



**RhoFAS**  
Fine Adjustment System



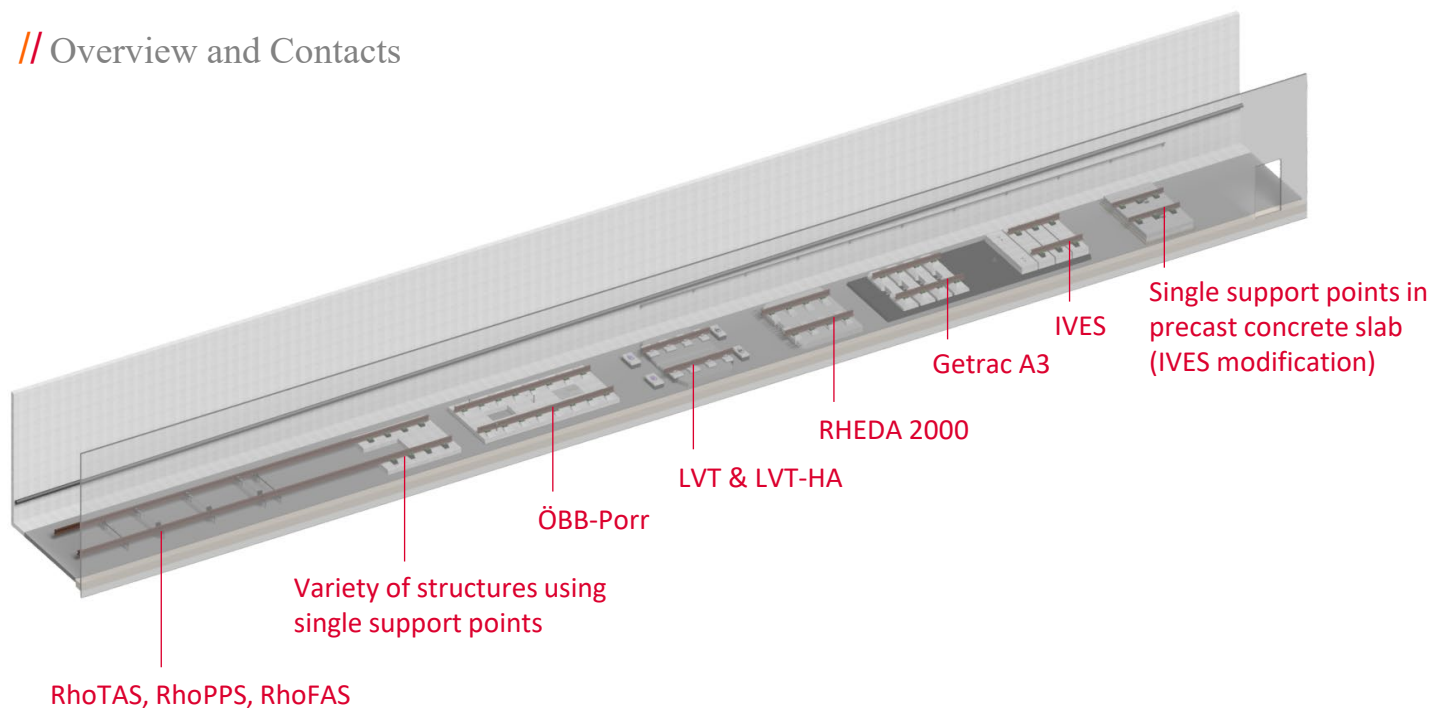
**LED-Handrail/handrailLIT**  
and Tunnel lighting  
Orientation and Guidance  
System

28.10.2021



# Track Display

## // Overview and Contacts



### Appointments

Contact us for a visit or consulting appointment:

**Günther Petz**  
guenther.petz@rsrg.com  
Tel. +43 664 8314953

**Rhomberg Bahntechnik GmbH**  
Bahntechnikhalle  
Stoeckenstraße 24  
6850 Dornbirn, Austria

**Rhomberg Sersa Rail Holding GmbH**  
Mariahilfstraße 29  
6900 Bregenz  
Austria