



The Greater Copenhagen Light Rail Nybrovej, Lyngby

Hovedstadens Letbane (The Greater Copenhagen Light Rail) is a transformative infrastructure project aimed at enhancing regional connectivity and sustainable mobility within the Greater Copenhagen area. Spanning 28 kilometers with 29 stations, the light rail line connects Ishøj in the south to Lyngby in the north along Ring 3, facilitating direct cross-city travel without the need to pass through central Copenhagen.

Initiated in 2018, the project is a collaborative effort between the Danish state, the Capital Region of Denmark, and 11 municipalities, including Lyngby-Taarbæk, Gladsaxe, Herlev, Rødovre, Glostrup, Vallensbæk, Albertslund, Brøndby, Hvidovre, Høje-Taastrup, and Ishøj. The light rail is designed to be quiet, fast, and environmentally friendly, with street-level stations that are easily accessible for individuals with mobility impairments, wheelchair users, strollers, and bicycles. Upon completion, it is expected to serve 13–14 million passengers annually.

Location: Copenhagen, Denmark
Client: Aarsleff Rail A/S
Construction period: 08/2024 – 12/2024
Services:
Executing companies: Rhomberg Sersa Nordics ApS
Contract value: EUR 1,13 Mio.



Read more:

The Greater Copenhagen Light Rail Nybrovej, Lyngby

Since August 2024, Rhomberg Sersa Nordics ApS, as a subcontractor to Aarsleff Rail A/S, has been responsible for the complete installation of non-embedded track on two sections at Nybrovej. This collaboration leverages Rhomberg Sersa's expertise to ensure the successful execution of this critical component of the project.

Permanent Way System – Facts and quantities:

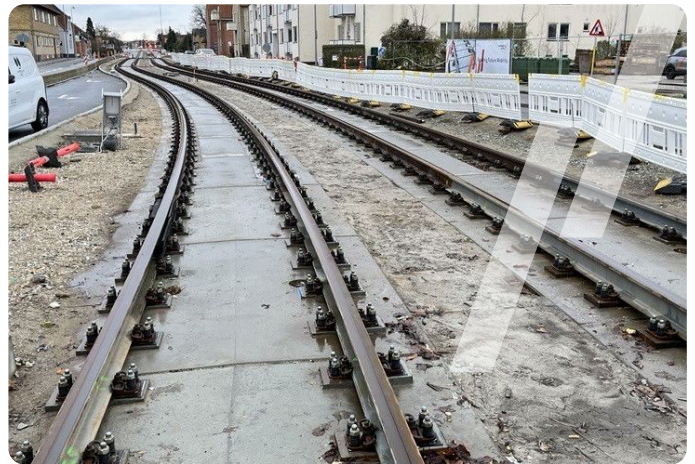
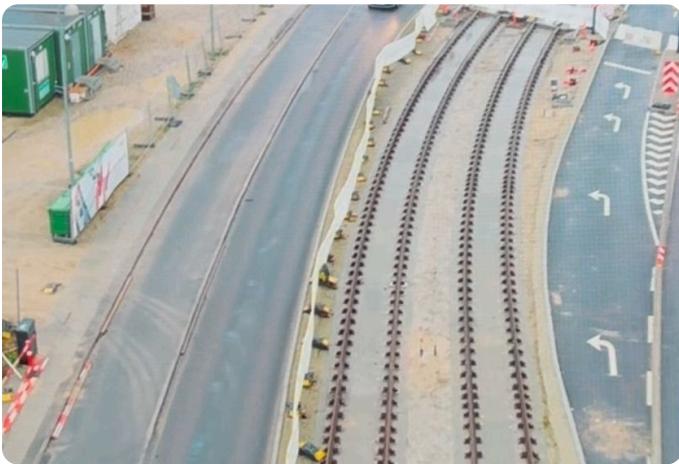
Green non-embedded tracks
The rail profile is 59 R2.

Nybrovej S – Section 26

499 meters of new track has been installed, incl.
1'348 pcs Vossloh 336 fastenings, and incl.
3'668 pcs anchors.

Nybrovej N – Section 27

495 meters of new track has been installed, incl.
1'342 pcs Vossloh 336 fastenings, and incl.
3'528 pcs anchors.



Read more: